

Geotechnical-Geological Characterization Studies

GeoView, Inc. is a full-service, geophysical firm serving the United States and Caribbean. GeoView has performed over 4,500 geophysical investigations. Over 2,500 of these projects were for Geotechnical or Geological Investigations.



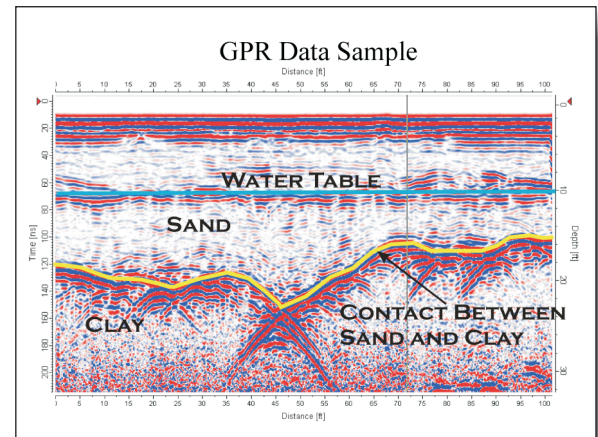
Services Offered

GeoView offers many geophysical tools for Geotechnical and Geological Characterization Studies. These tools include:

- Ground Penetrating Radar (GPR)
- Electrical Resistivity Imaging (ERI)
- Seismic Refraction, Reflection, MASW and Cross-Hole
- Electromagnetics (EM and TDEM)

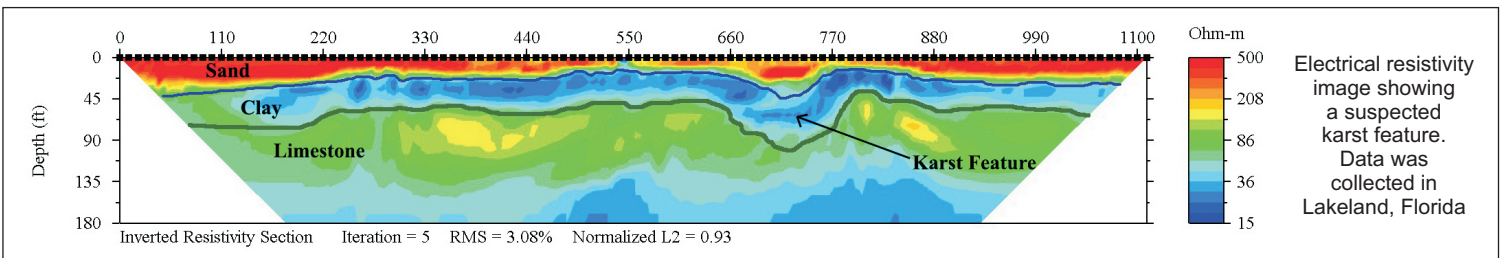
Studies Can Be Performed with integrated GPS technology.

Final results can often be provided in “real time” allowing features of interest to be identified and marked during the site survey or in complete final reports with figures in AutoCAD or ArcView formats.



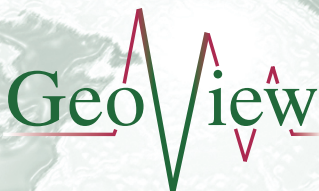
Typical Projects

- Karst (Sinkhole) Characterization Studies
- Determining Depth to Top of Rock or Clay
- Delineating Buried Debris (Metallic and Non-Metallic)
- Underground Utility Designation
- Hydrogeological Studies
- Soil Resistivity Tests



Why Choose GeoView?

- GeoView is a professional services company utilizing state-of-the-art equipment
- Professionally trained and certified, highly-experienced staff with OSHA 40-hour Hazwoper training
- Senior personnel are Professional Geologists licensed in the States of Florida, Georgia, South Carolina and California



information@geoviewinc.com
www.geoviewinc.com

Corporate Office

4610 Central Avenue - St. Petersburg, FL 33711
phone: (727) 209-2334 - fax: (727) 328-2447

Jacksonville Office

P.O. Box 15363 - Fernandina Beach, FL 32034
phone: (904) 261-4933 / (904) 556-9595

GeoView is a wholly owned subsidiary of ATI, Inc. and has MBE, DBE & SDB certification

GeoView carries general, professional and pollution liability insurance

Experience is What Makes Us Different